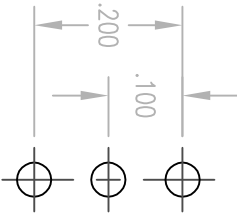
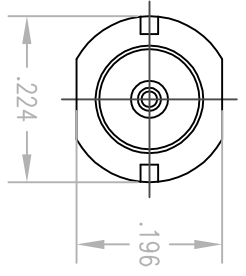
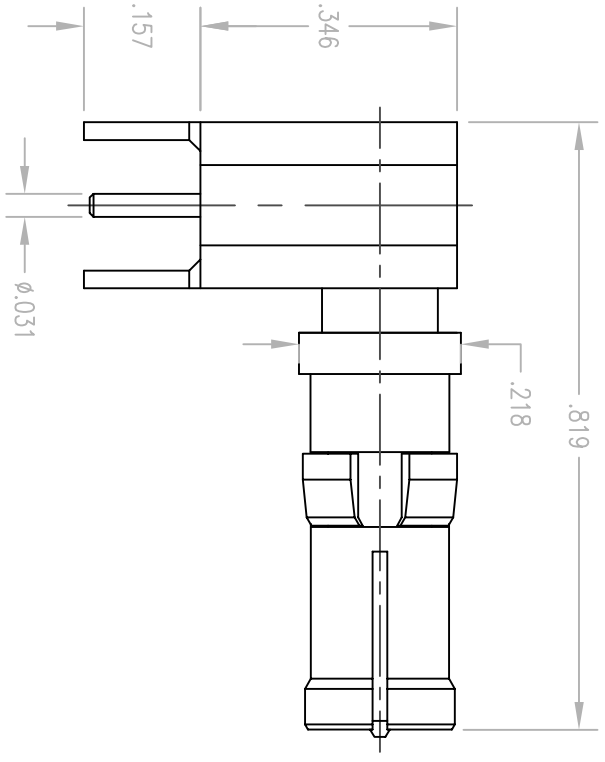


REV.	DESCRIPTION	DATE	BY	APPD.
D	NPR 1658	2/1/00	JMH	



MOUNTING HOLE LAYOUT

NOTES:

1. MATERIALS:

FRONT BODY: BERYLLIUM COPPER PER ASTM B196
 CLIP RING: PHOSPHOR BRONZE PER ASTM B103
 ALL OTHER METAL PARTS: BRASS PER ASTM B16
 INSULATOR: TEFLON PER ASTM D1710

2. FINISH:

CAP: .000005 MIN. GOLD PER MIL-G-45204 OVER
 .000050 MIN. NICKEL PER QQ-N-290
 CLIP RING: .000100 MIN. NICKEL PER QQ-N-290 OVER
 COPPER FLASH
 ALL OTHER METAL PARTS: .000030 MIN. GOLD PER MIL-G-45204 OVER
 .000050 MIN. NICKEL PER QQ-N-290

PER ASME Y14.5M-1994 UNLESS OTHERWISE SPECIFIED: TOLERANCES ARE IN INCHES (MM) DECIMALS .XX ± .01/0.254 FRACTIONS .XXX ± .005/0.127 ANGLES ± Z° SCALE: 4:1		LITTON Winchester/Reticon 400 Park Road Waterford, Connecticut 06795	
CUSTOMER DRAWING		TITLE RECEPTACLE RIGHT ANGLE P.C. MOUNT	
DRAWN JMH APPROVED	DATE 2/1/00 DATE	CHECKED	DATE
A	203-010-6140G	SFT.	1 OF 1
		REV.	D